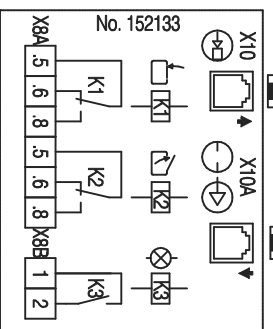
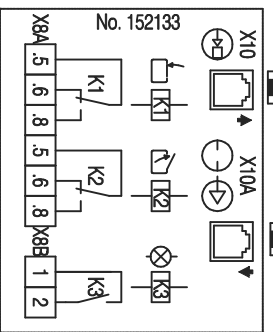
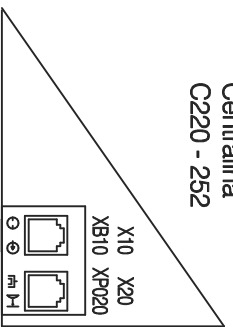


- H1 Control light "DOOR CLOSE"
 - H2 Control light "DOOR OPEN"
 - H3 Garage light
 - H41 Traffic light "RED"
 - H42 Traffic light "GREEN"
 - K1 Relay "DOOR is CLOSE"
 - K2 Relay "DOOR is OPEN"
 - K3 Relay garage light
 - X8A Plug connection for relay contacts
 - X8B Plug connection for light relays
 - X10 Plug socket for "control unit"
 - X10A Plug socket for "external control elements"
- *) Relay contact 250V AC max. 60W

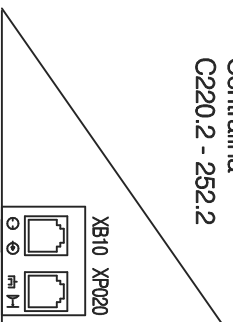


a		GTA C220-252		P008-08-2		Biltschke		Datum		2008-05-09	
		hinzu				Bearb.		Biltschke			
Zustand		Änderung		Datum		Name		Norm		Reihemeier	
1											
2											
3											
4		Ers. f.8/21600, #8050564				Ers. d. #85235					
5		Anschlußplan		Endpositionsrelais für GTA		C2XX - 2XX.2					
6		Zeichnungs-Nr.		8/22633		Artikel-Nr.		85235		Blatt 1	
7		von 1 Bl									
8											

Centralina
C220 - 252

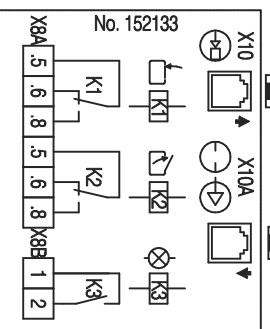
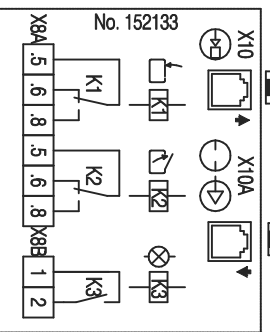
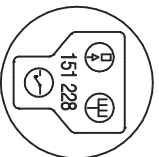


Centralina
C220.2 - 252.2

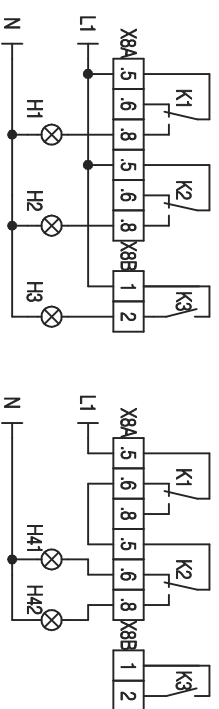


porticello oppure
cavo a 6 poli verso gli
accessori esterni, se previsti

porticello oppure
cavo a 6 poli verso gli
accessori esterni, se previsti



COLLEGAMENTO DEL LAMPEGGIANTE



- H1 LED "porta chiusa"
 - H2 LED "porta aperta"
 - H3 luce di cortesia
 - H41 lampeggiante rosso
 - H42 lampeggiante verde
 - K1 relé "porta chiusa"
 - K2 relé "porta aperta"
 - K3 relé luce di cortesia
 - X8A morselli per contatti relé
 - X8B morselli per relé luce
 - X10 innesto a spinotto verso centralina
 - X10A innesto a spinotto verso accessori esterni, ove previsti oppure innesto per porticello
 - X10A contatti relé 250 V, max 60 W
- *) collegamento a rete
L1
N
neutro

Attenzione: Nel caso in cui sia previsto un singolo lampeggiante, seguire lo schema di collegamento di destra e collegare il lampeggiante H41 al morsello K2.6 (quinto morsello da sinistra).

a		GTA C220-252	P08-08-2	Bilische	Datum	2008-05-09	Anschlußplan Endpositionsrelais für GTA C2XX - 2XX.2		Zeichnungs-Nr. 8/22633		Artikelnr. 85235		Blatt 1 von 1 Bl	
Zustand		hinzü			Gepr.	Reihmeier								
Änderung			Datum	Name	Norm		Urspr.		Ets. f.8/21600, #8050564		Ets. d.#85235			
1														
2														
3														
4														
5														
6														
7														
8														